

01-02

03-04

05-08

, "" , ` 0 1 cstf6OEKO` •h-@ %o& W Eu e tq 0ÄA€ hF4 I c,0Ð

09-18 **ESG**

ESG

53-58

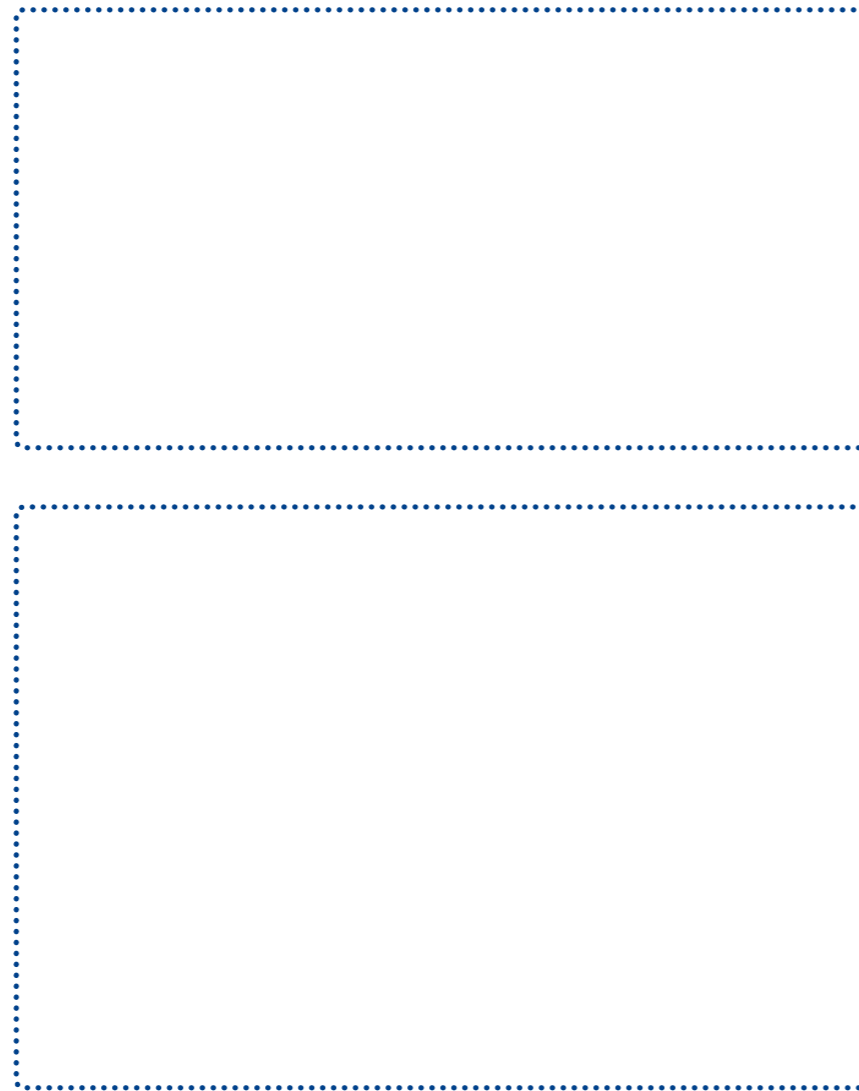
	()	Environmental,	2020	6	19	
Social and Governance, ESG	()	(/
)	(ESG)	2019	1	1	12	31

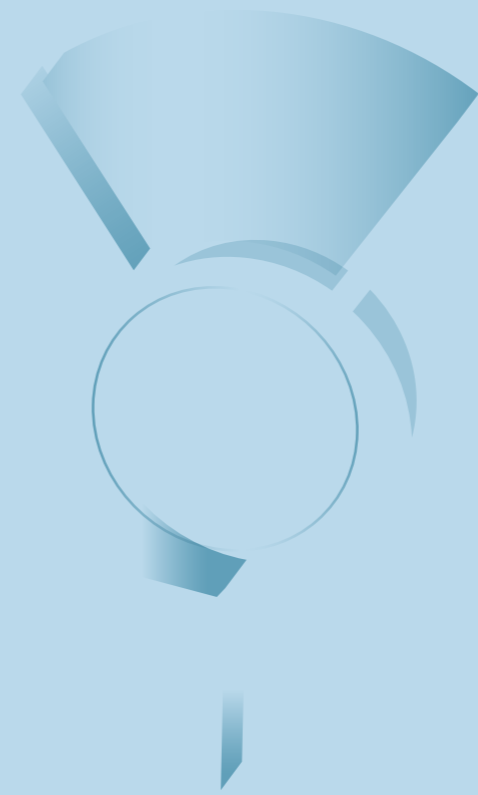
ESG

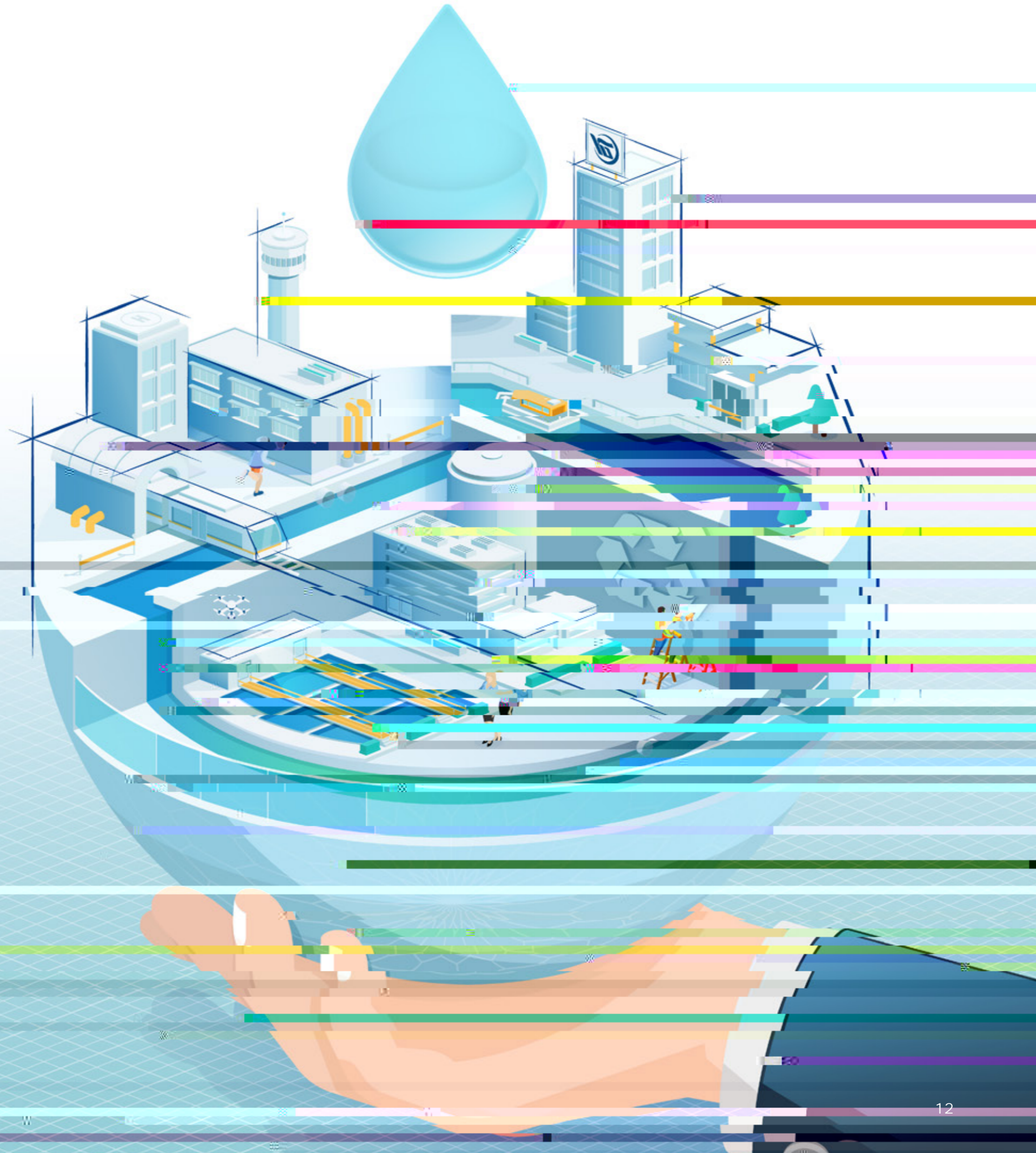
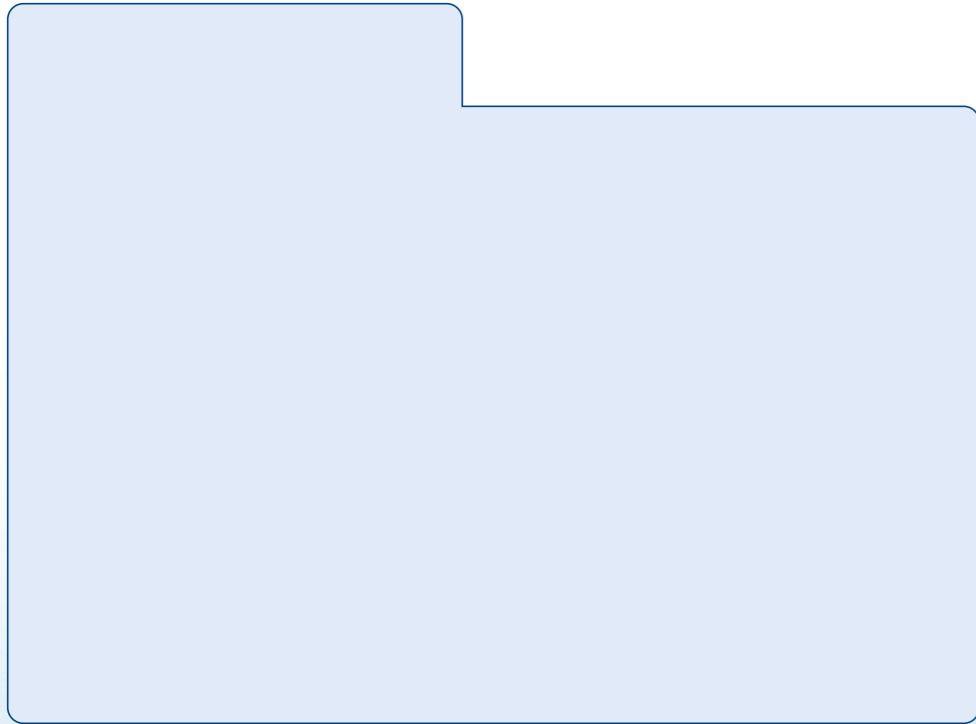
72

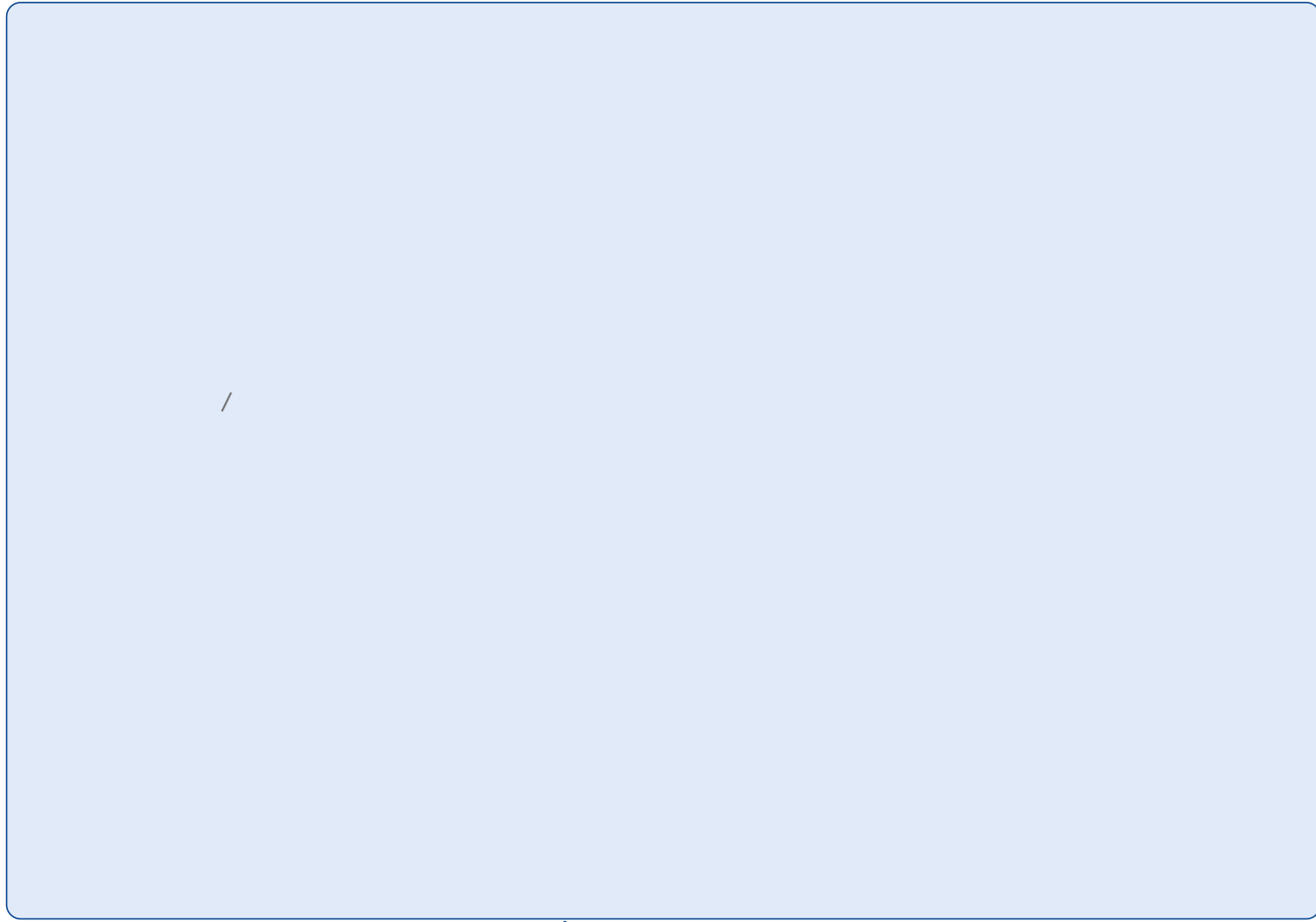
+86-23 6186 7777
+86-23 6186 7775
kangda@kangdaep.com
www.kangdaep.com

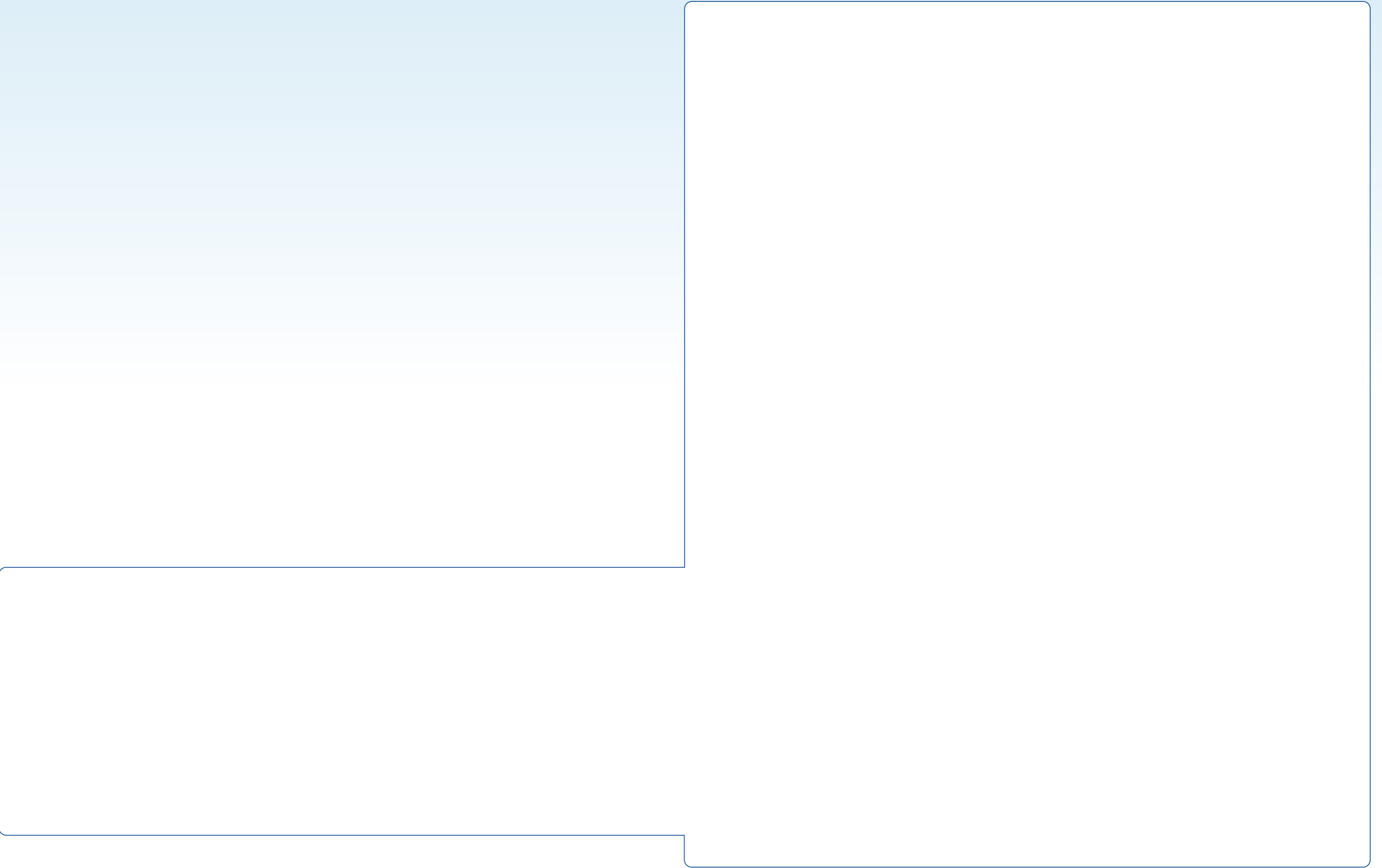














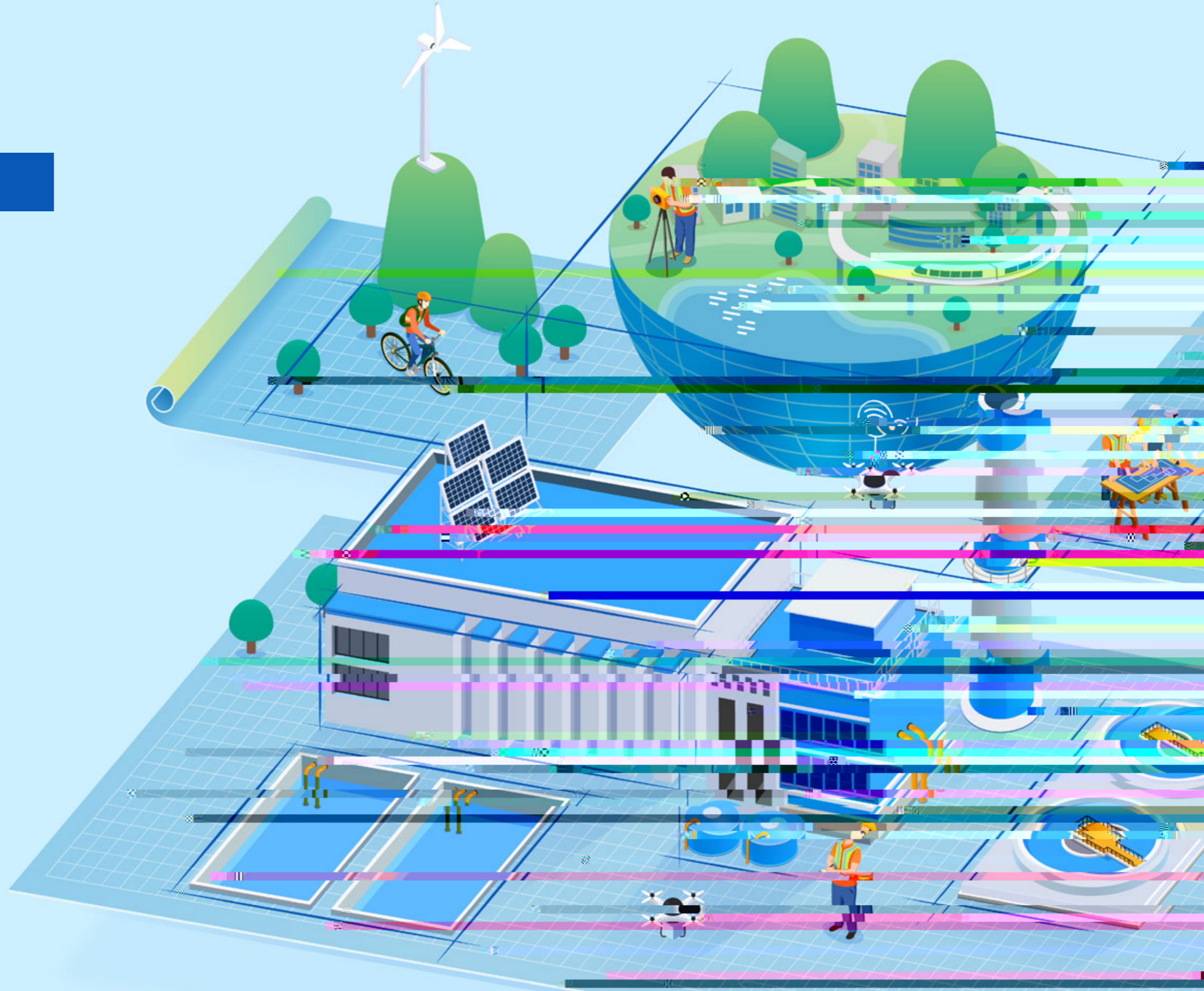
22



79

2019



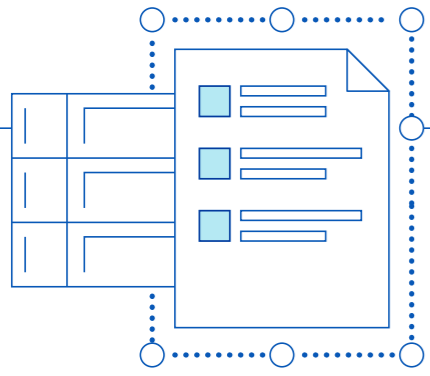




01

2019

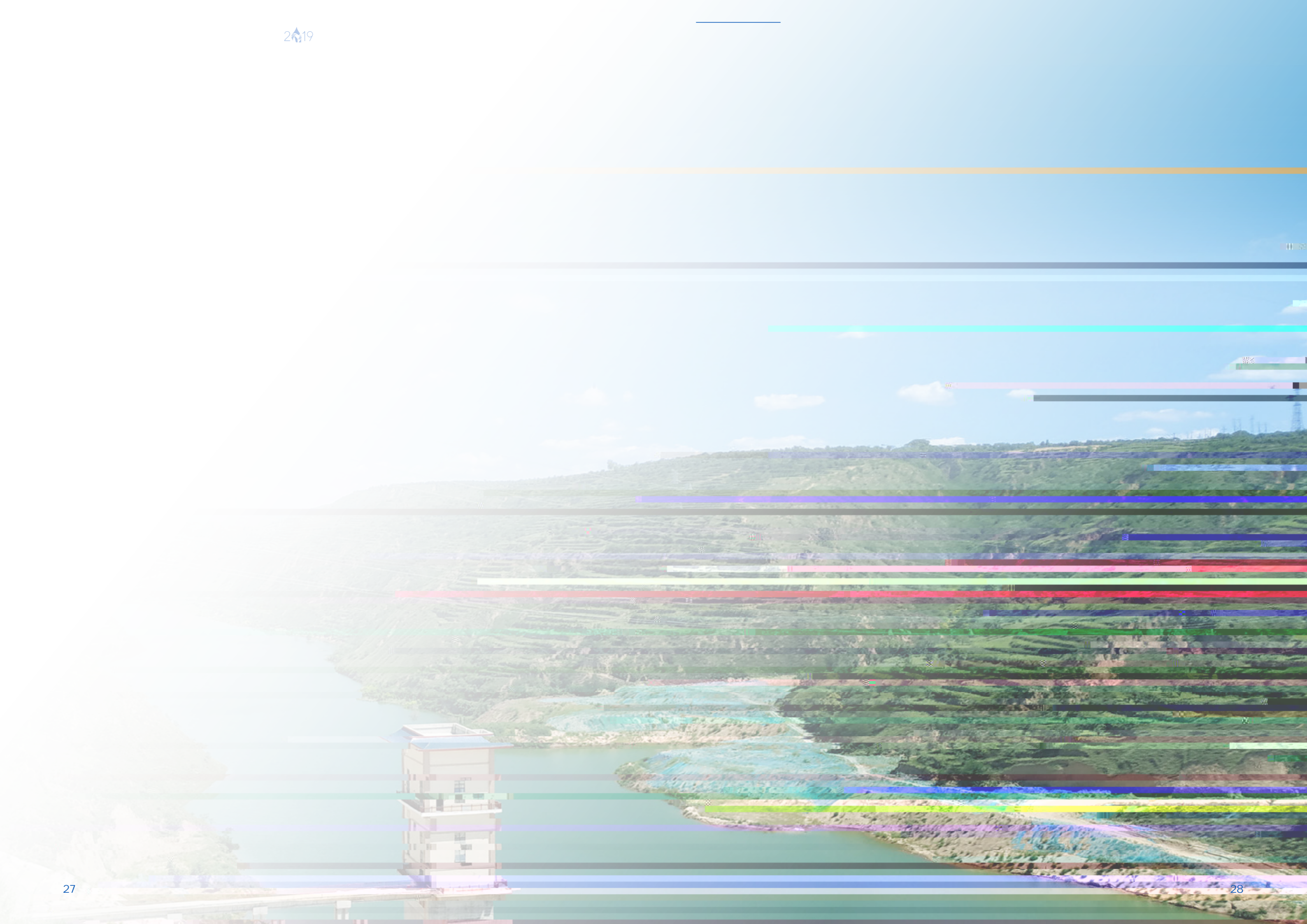
2019



02

MBBR



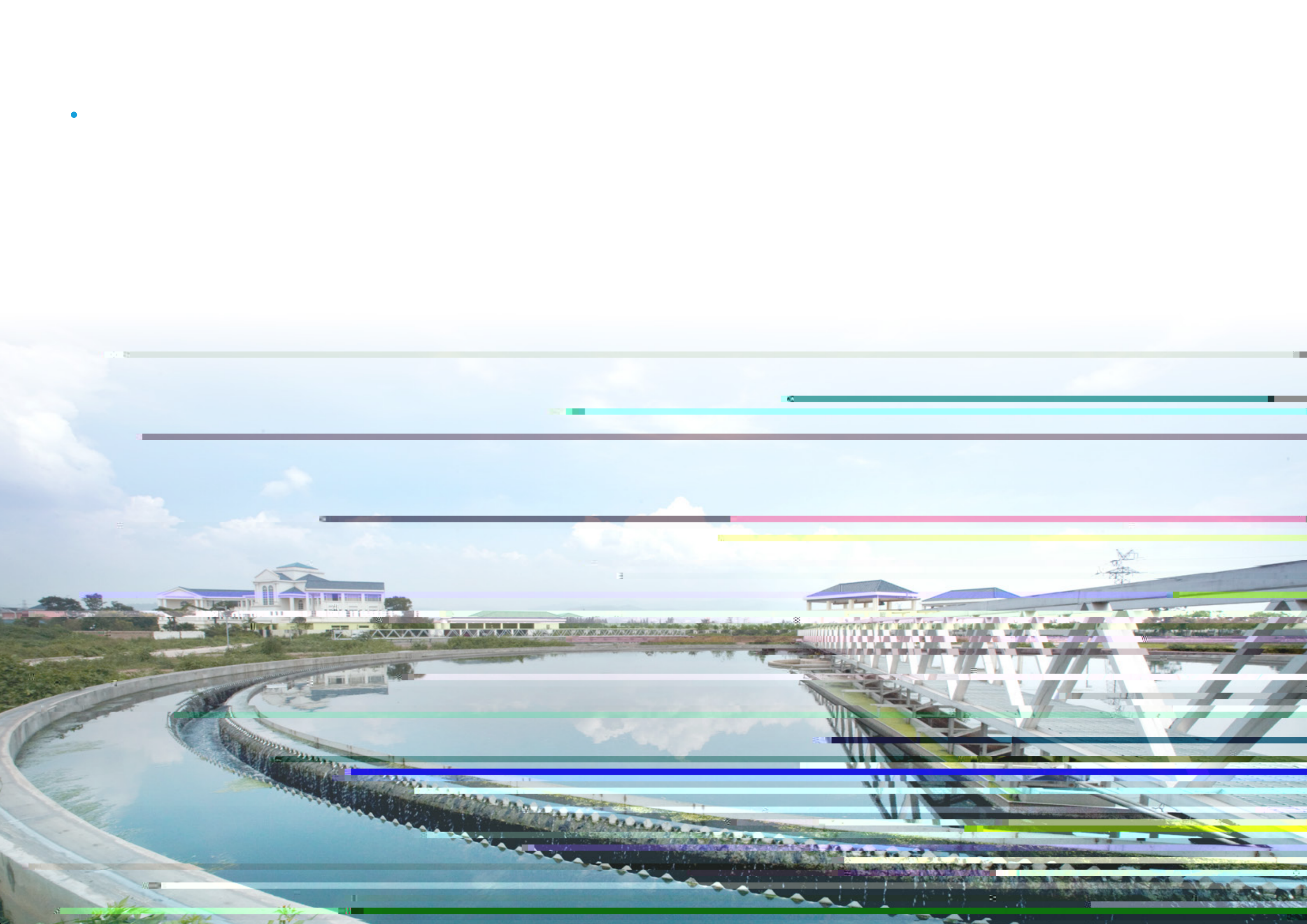


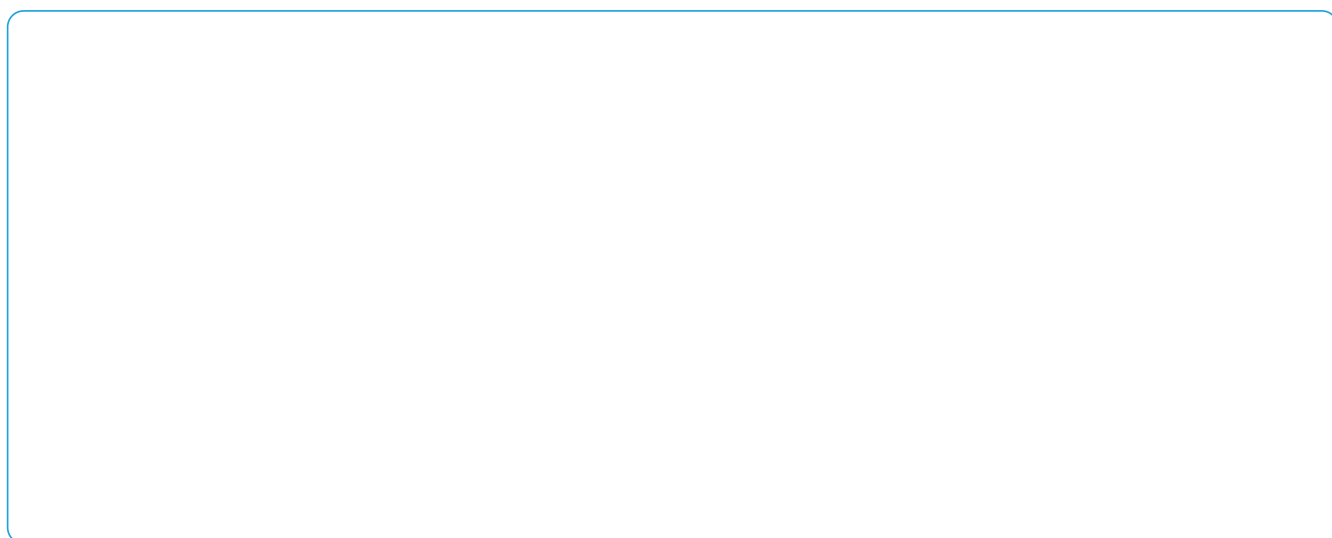
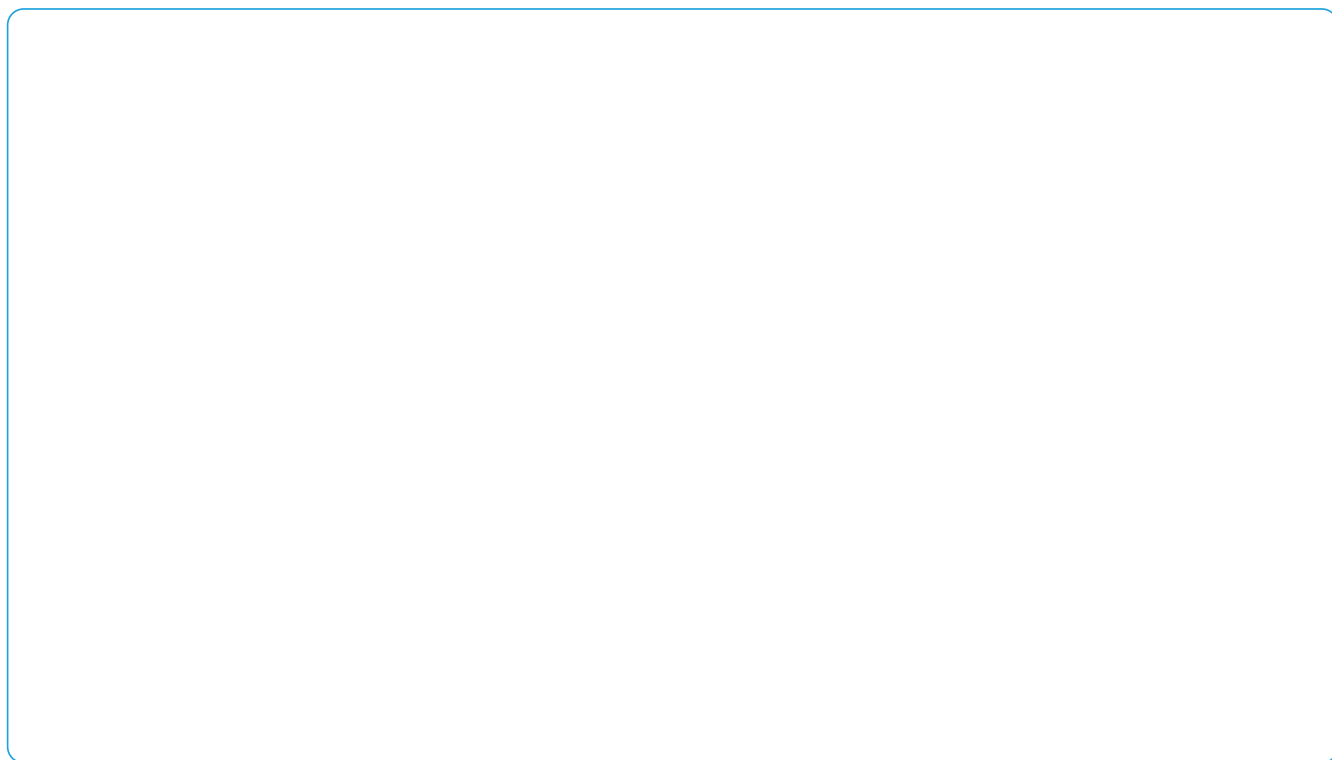


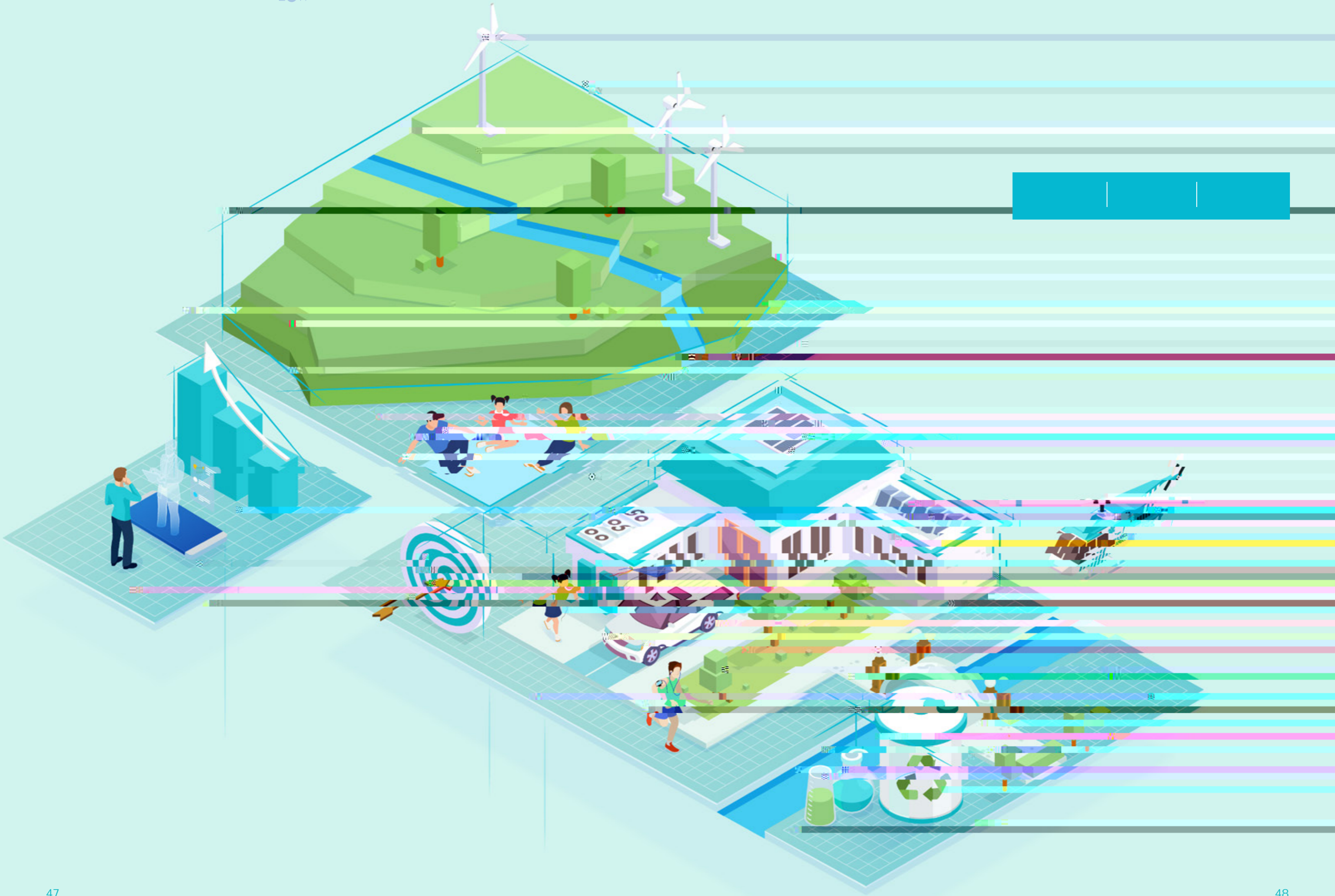


2019









01

ISO 14001

02

GB/T 50378-2014

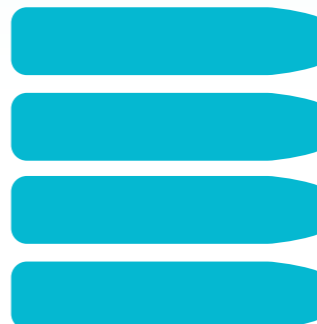
LED

GB/T50905-2014

-

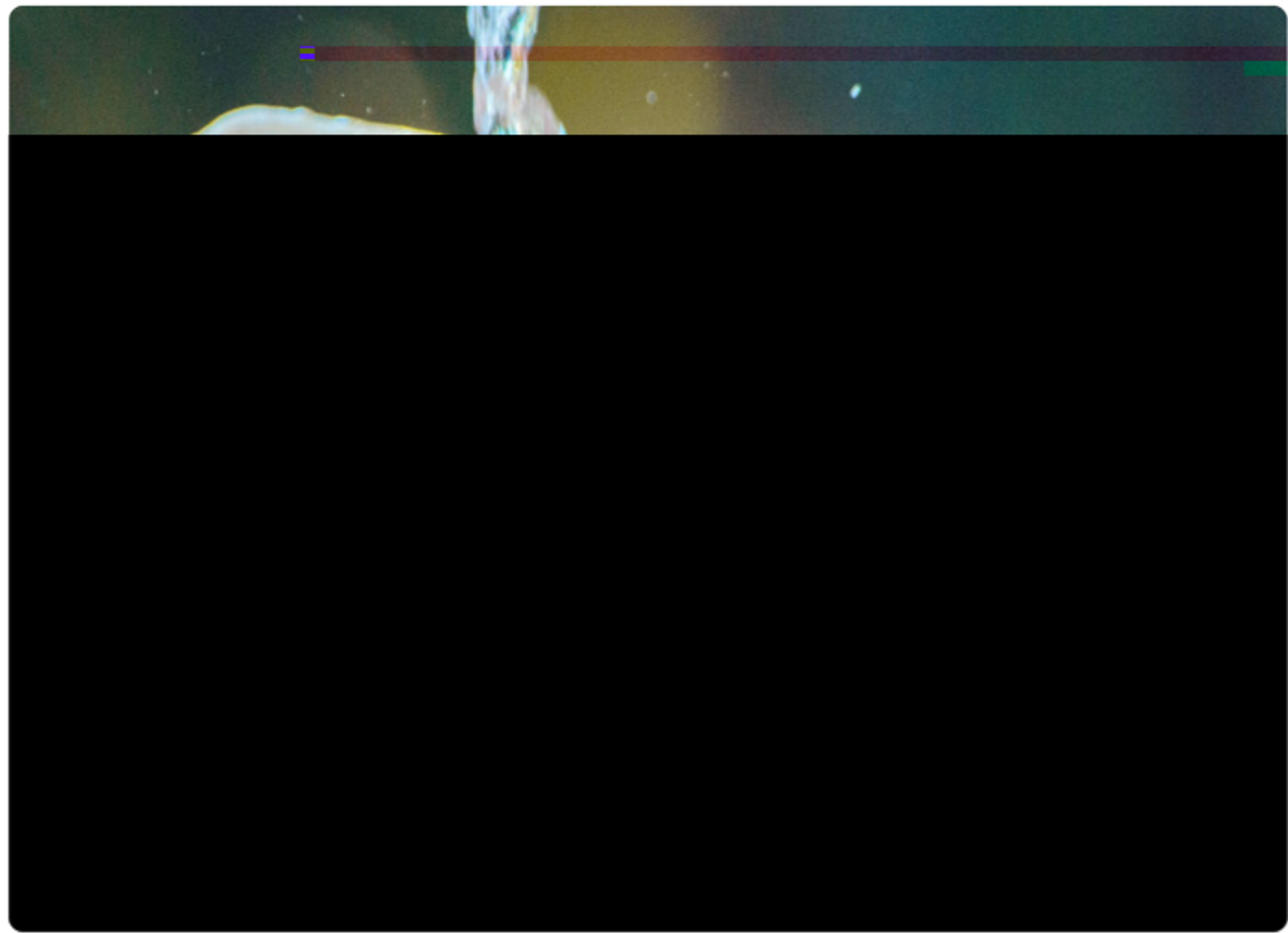
		2019
		123,576
		358,444.4
		5,080
		356,051,740.7
		44,301.2
	/	0.04

-






	2019
	850,764.9
	2.3



✓

✓

✓



40% 70%
GB14554-93

GB16297-1996

A.

A1

	(a) (b)	P48-52
A1.1		P52
A1.2		P50
A1.3		P52
A1.4		P52
A1.5		P49-52
A1.6		P52

A2

		P49-50
A2.1	/	P50
A2.2		P51
A2.3		P49-51
A2.4		
A2.5		

A3

		P39-44
A3.1		P39-44

B.

B1

P29-36



B5.1		P26
B5.2		P26
<hr/>		
B6		
	(a) (b)	P21-22
B6.1		
B6.2		
B6.3		P23-24
B6.4		P21-22
B6.5		
<hr/>		
B7		
	(a)	P18

	(b)	
B7.1		P18
B7.2		P18
<hr/>		
B8		
		P37-46
B8.1		P37-46
B8.2		